

## Information

Thickness (in)			Design Weight <sup>(2)</sup>				Pallet			Hebel Thin Bed Mortar <sup>(3)</sup>	
cm*	in <sup>(1)</sup>	in*	AAC-4		AAC-6		piece	ft <sup>2</sup>	ft <sup>3</sup>	lb/ft <sup>2</sup>	lb/ft <sup>3</sup>
10	4	3.937	12.29	16.14	14.75	19.37	180	236.4	77.6	0.45	1.37
12.5	5	4.921	15.36	20.17	18.43	24.24	144	189.1	77.6	0.56	1.37
15	6	5.906	18.43	24.21	22.12	29.05	120	157.6	77.6	0.68	1.37
17.5	7	6.889	21.51	28.24	25.81	33.89	96	126.1	72.4	0.79	1.37
20	8	7.874	24.58	32.28	29.49	38.73	84	110.3	72.4	0.90	1.37
25	10	9.843	30.72	40.34	36.87	48.41	72	94.6	77.6	1.13	1.37
30	12	11.811	36.87	48.41	44.24	58.10	60	78.8	77.6	1.35	1.37

<sup>(1)</sup> Nominal dimension, <sup>(2)</sup> Values consider material's moisture content, <sup>(3)</sup> Average, \*Exact dimension.

### AAC-4

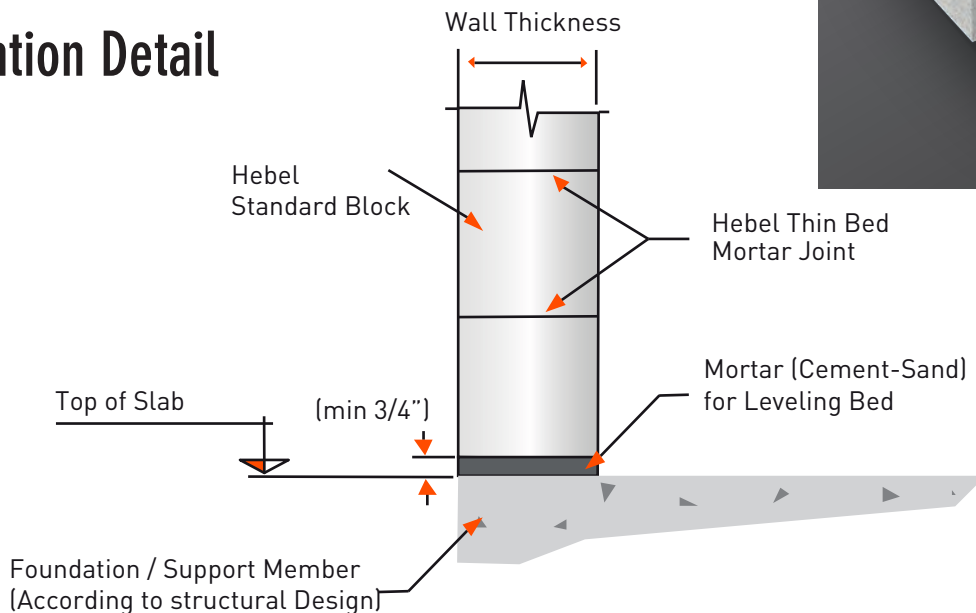
Design Weight <sup>(2)</sup>	37.42 lb/ft <sup>3</sup>
Minimum Compressive Strength	580 lb/in <sup>2</sup>

### AAC-6

Design Weight <sup>(2)</sup>	44.95 lb/ft <sup>3</sup>
Minimum Compressive Strength	870 lb/in <sup>2</sup>



## Installation Detail



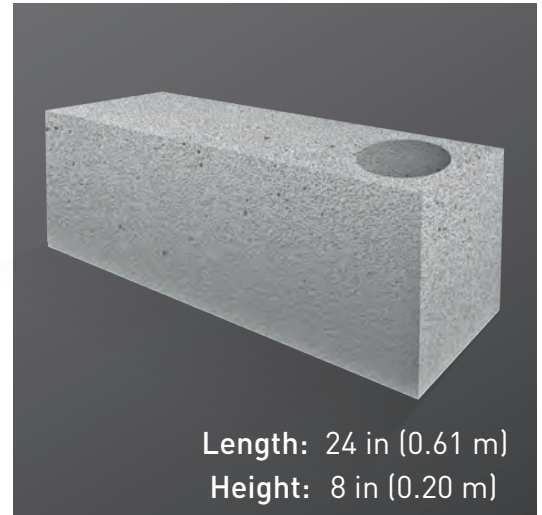
### Contact us for more information:

Litecrete, Inc.  
 (210)402-3223 / 1 877 41 HEBEL (1 877 41 43235)  
 hebel-usa@hebel.mx  
 www.hebel-usa.com

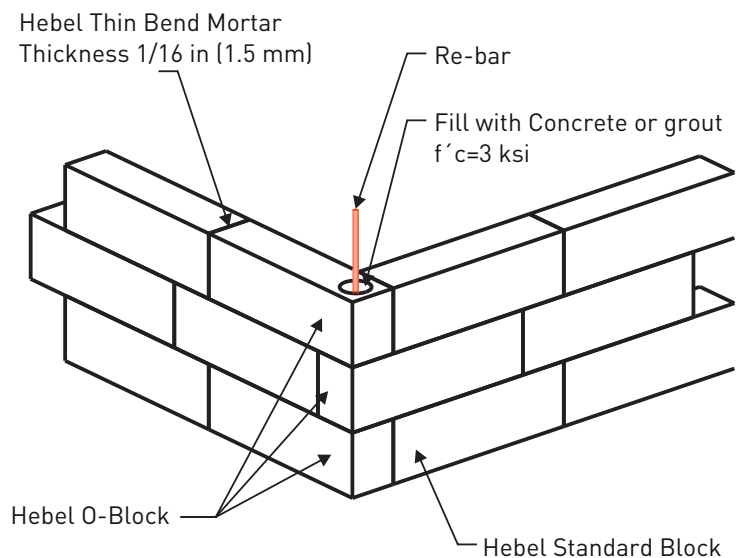
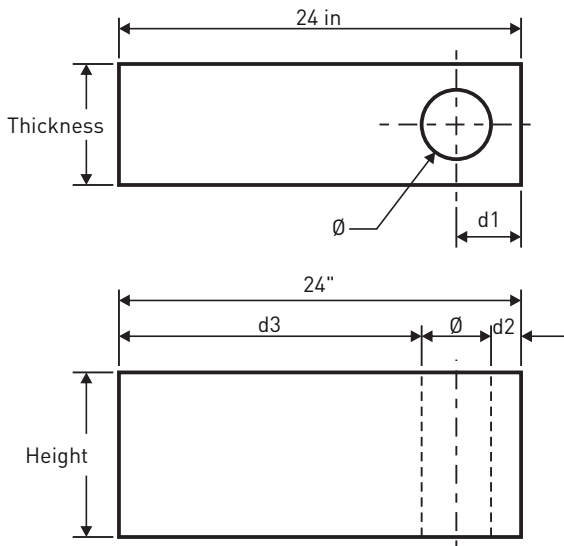
## Information

Thickness		Design Weight <sup>(2)</sup>							Pallet	
in <sup>(1)</sup>	in*	AAC-4	AAC-6	Diam.(Ø)	Vol.	d <sub>1</sub>	d <sub>2</sub>	d <sub>3</sub>	piece	ft <sup>2</sup>
		lb/piece		in	ft <sup>3</sup> /ft	in				
5	4.921	7.15	8.58	2.756	0.0006	2.461	1.083	20.177	144	189.1
6	5.906	8.22	9.86	3.543	0.0010	2.953	1.181	19.291	120	157.6
7	6.890	9.81	11.77	3.543	0.0010	3.445	1.673	18.799	96	126.1
8	7.874	10.75	12.90	4.331	0.0015	3.937	1.772	17.913	84	110.3
10	9.843	13.92	16.71	4.331	0.0015	4.921	2.756	116.92	72	94.6
12	11.811	17.10	20.52	4.331	0.0015	5.906	3.740	17.10	60	78.8

<sup>(1)</sup> Nominal dimension, <sup>(2)</sup> Values consider material's moisture content, \*Exact dimension



## Installation Detail



AAC-4	
Design Weight <sup>(2)</sup>	37.42 lb/ft <sup>3</sup>
Minimum Compressive Strength	580 lb/in <sup>2</sup>
AAC-6	
Design Weight <sup>(2)</sup>	44.95 lb/ft <sup>3</sup>
Minimum Compressive Strength	870 lb/in <sup>2</sup>

Contact us for more information:

Litecrete, Inc.  
 (210)402-3223 / 1 877 41 HEBEL (1 877 41 43235)  
 hebel-usa@hebel.mx  
 www.hebel-usa.com

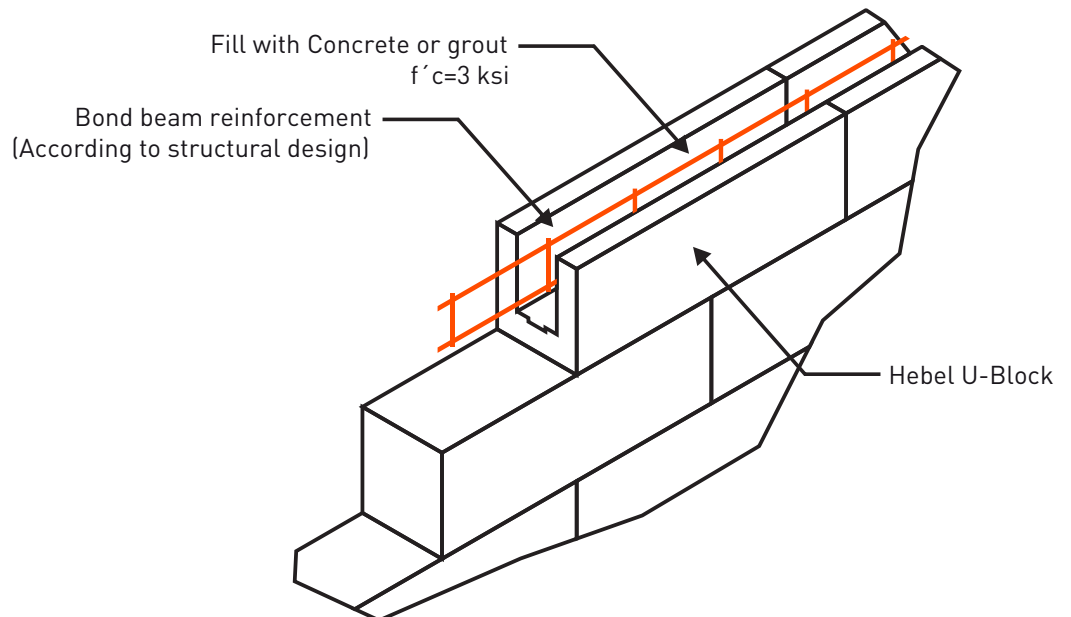
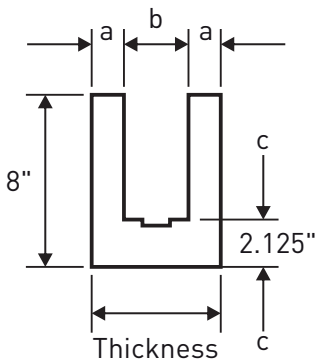
## Information

Thickness		Design Weight <sup>(2)</sup>		Hollow <sup>(3)</sup>			Pallet	
		AAC-4	AAC-6	Vol.	a	b		c
in <sup>(1)</sup>	in*	lb/piece		ft <sup>3</sup> /ft	in			pcs
5	4.921	14.35	17.24	0.1636	1.473	2.0	1.975	108
6	5.916	15.46	18.57	0.2435	1.473	3.0	2.960	96
7	6.899	18.09	21.74	0.2825	1.673	3.5	3.543	72
8	7.874	20.02	24.05	0.3404	1.673	4.3	4.528	72
10	9.843	22.23	26.71	0.5002	1.870	6.3	5.203	48
12	11.811	24.44	29.36	0.6600	1.870	8.3	8.071	48

<sup>(1)</sup>Nominal dimension, <sup>(2)</sup> Values consider material's moisture content, <sup>(3)</sup> Place re-bars and fill with concrete (lintel or bond beam) \*Exact dimension.



## Installation Detail



AAC-4	
Design Weight <sup>(2)</sup>	37.42 lb/ft <sup>3</sup>
Minimum Compressive Strength	580 lb/in <sup>2</sup>
AAC-6	
Design Weight <sup>(2)</sup>	44.95 lb/ft <sup>3</sup>
Minimum Compressive Strength	870 lb/in <sup>2</sup>

Contact us for more information:

Litecrete, Inc.  
(210)402-3223 / 1 877 41 HEBEL (1 877 41 43235)  
hebel-usa@hebel.mx  
www.hebel-usa.com